

# Create a Quiz with Automated Scoring

## What feature do I use?

Request Type Management.

## What is the difference between a Request and a Survey?

In a nutshell use a Survey when you want to survey people and view the aggregate result. For everything else use a Request. The only thing the two features have in common is that they use the same Form Builder tool.

## Steps to create a Quiz with Automated Scoring:

- 1) Select Add New Request Type which will go to Request Type Management.
- 2) In *Type* field enter a name.
- 3) If you want instructions to be displayed above the form enter them in the *Description* field.
- 4) Click Form Builder icon which will go to Form Builder.
- 5) In the Form Builder Header section *Form Builder Title* field enter the same name you entered in the *Description* field in Request Type Management.
- 6) Add questions using Question Details section.
- 7) For each question click Scoring & Branching button to go to Response Scoring Management as shown below:

Choice Name	Choice Score	Go To Form Upon	Go To Form	Go To Question
Eliminating the patients ability to reproduce.	0	--Select--	--Select--	
Process of killing microorganisms.	1	--Select--	--Select--	
Wiping surfaces down with 409.	0	--Select--	--Select--	
A pain in you know what.	0	--Select--	--Select--	

- 8) For each response, in the *Choice Score* column enter a score value as an integer. This value will be added to the user's total score if they select the response.
- 9) Click Close button and confirm save. You will be returned to Form Builder Management.
- 10) Repeat the above steps for each question.
- 11) When finished entering questions click on Define Score Messages link located in Form Builder Header section to go to Score Messages Management as shown below:

The screenshot shows a web application interface for 'Score Messages Management'. At the top, there's a navigation bar with 'Main Menu', 'Dashboard', and 'PortalProdigy'. Below this, a table lists 'Existing Messages' with columns for Name, Max Points, and Min Points. Below the table is a 'New Score Message' form with fields for Max points, Min points, Name, and a large text area for the Message. There are also tags like %%ResultScore%%, %%MaxScore%%, and %%Ticket#%%. At the bottom, there are buttons for 'Add New', 'Save', 'Delete', 'Delete All', 'Cancel', and 'Close'.

Name	Max Points	Min Points
Expert	10	10
Knowledgeable	9	8
Student	7	6
Job Seeker	5	0

**New Score Message**

Max points:

Min points:

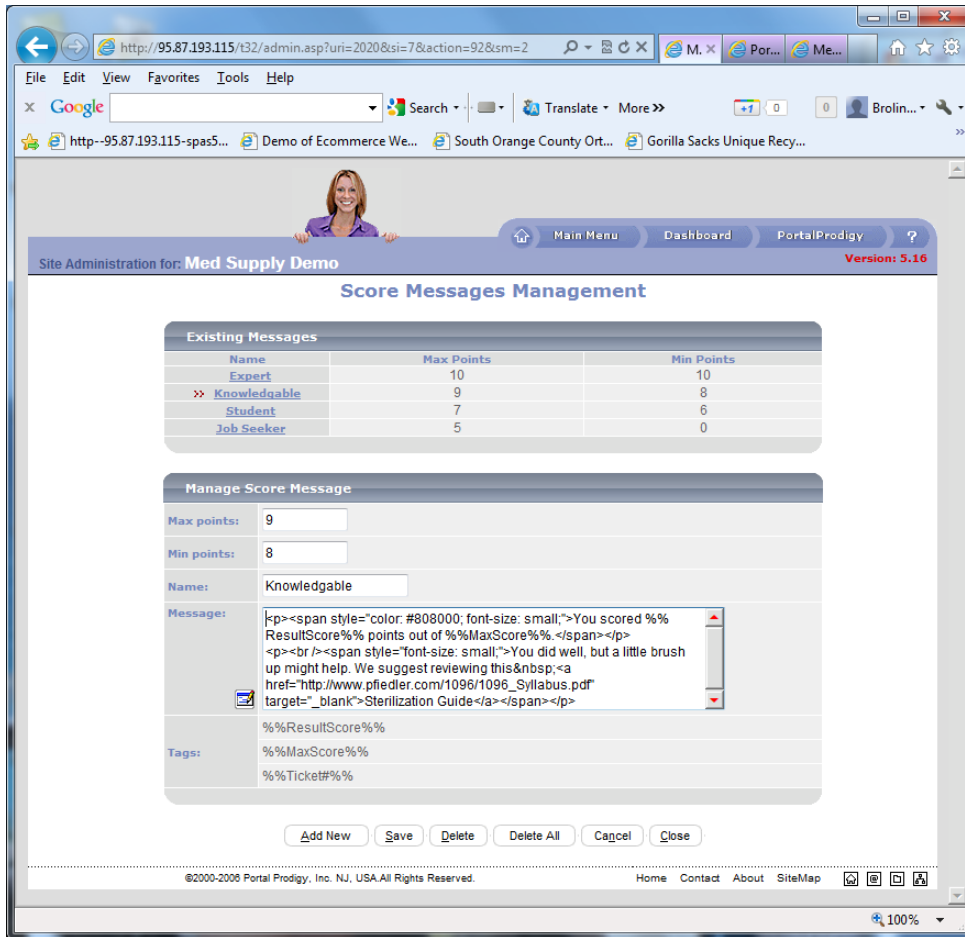
Name:

Message:

Tags: %%ResultScore%%  
%%MaxScore%%  
%%Ticket#%%

Buttons: Add New, Save, Delete, Delete All, Cancel, Close

- 12) For each Grade (Score Range) complete the New Score Message section and click *Save* or *Add New*. *Add New* saves and puts you into add new mode whereas *Save* leaves you in edit mode.
- 13) In the *Max Points* field enter the upper range and in the *Min Points* field enter the lower range.
- 14) The Name field is optional. In the Name field you may enter a name for the Grade such as "A", "Expert", or "Passed".
- 15) In the Message field enter what you want the user to see after they submit their Quiz. See the example below:



16) You can use the HTML Editor to create the Message. The tags are dynamically replaced by applicable values.

17) The tag %%ResultScore%% inserts the user's score.

18) The tag %%MaxScore%% inserts the maximum possible score.

19) The tag %%Ticket#%% inserts the Request ID. This is a reference number that can be used to retrieve the user's quiz.

In the example above we used the HTML Editor which created the following HTML code for us:

```
<p><span style="color: #808000; font-size: small;">You scored %%ResultScore%% points out of
%%MaxScore%%.</span></p>
```

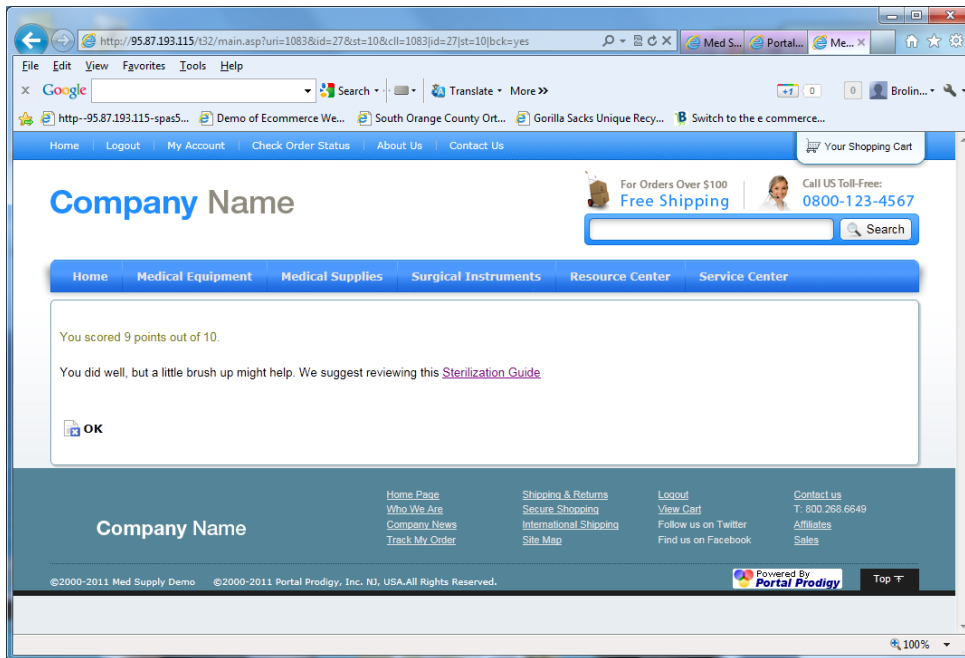
```
<p><br /><span style="font-size: small;">You did well, but a little brush up might help. We suggest
reviewing this&nbsp;<a href="http://www.pfiedler.com/1096/1096_Syllabus.pdf"
target="_blank">Sterilization Guide</a></span></p>
```

Which gets displayed as:

You scored 9 points out of 10.

You did well, but a little brush up might help. We suggest reviewing this [Sterilization Guide](#)

Below is the actual page:



- 20) When finished entering Grades, click Close and be sure confirm if prompted to save. This will return you to Form Builder Management.
- 21) Click Close in Form Builder Management and be sure to confirm if prompted to save.
- 22) Click Close in Form Builder Management and be sure to confirm if prompted to save. This will return you to Request Type Management. (If it returns you to Search for Survey Topics don't worry it just means your session timed-out and Form Builder did not know that you called it from Request Type Management).
- 23) Click Close in Request Type Management and be sure to confirm if prompted to save.
- 24) You can use Menu Builder to add a link to your Quiz. In Menu Builder be sure to select "Feature Record" radio button option for *Menu Item Option* field and select "Request Type" as the feature. You can use the Search icon to select your quiz.